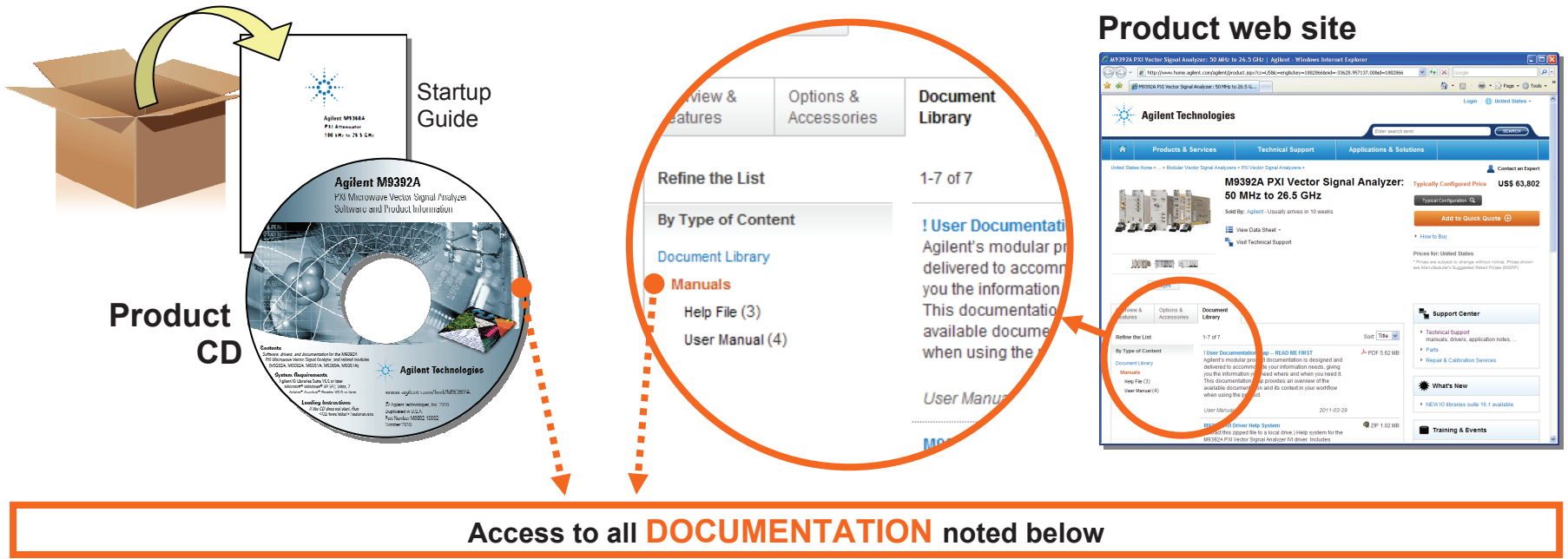


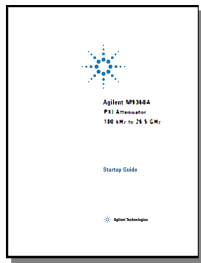
Modular Products User Documentation Map

Agilent's modular product documentation is designed and delivered to provide you information when and where you need it.



Access to all **DOCUMENTATION** noted below

Startup Guide



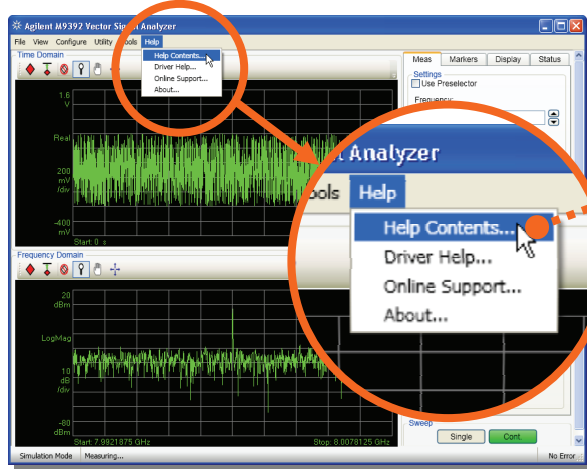
- Unpack product
- Verify shipment
- Install software
- Install & connect hardware
- Verify operation
- Troubleshooting

Data Sheet

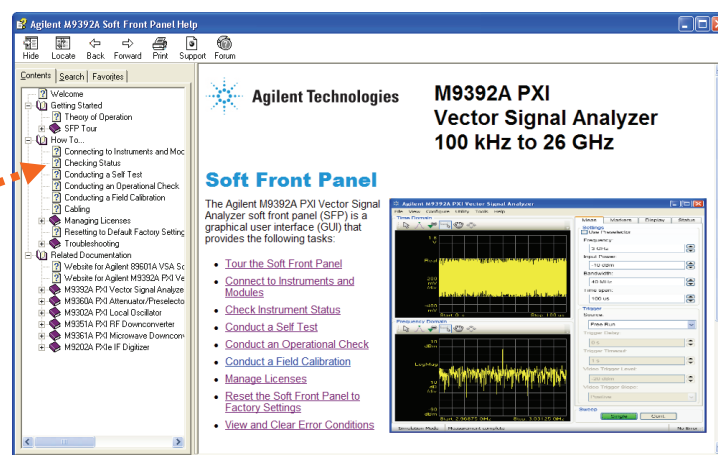


- Product description
- Technical specifications

Soft Front Panel (SFP) user interface

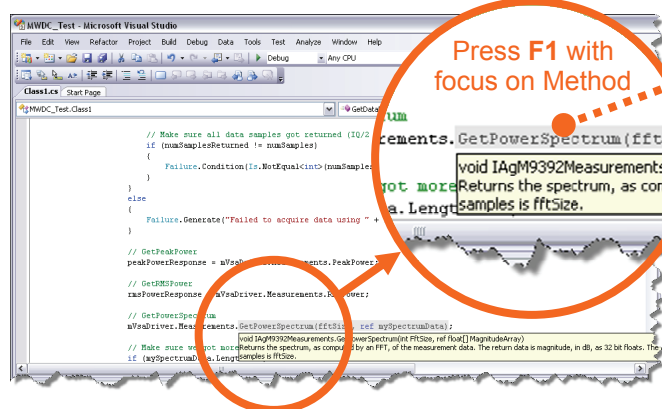


SFP help system



- Theory of operation
- Block diagram
- Configuration
- Self test
- Operational check
- Field calibration
- Troubleshooting

Visual Studio



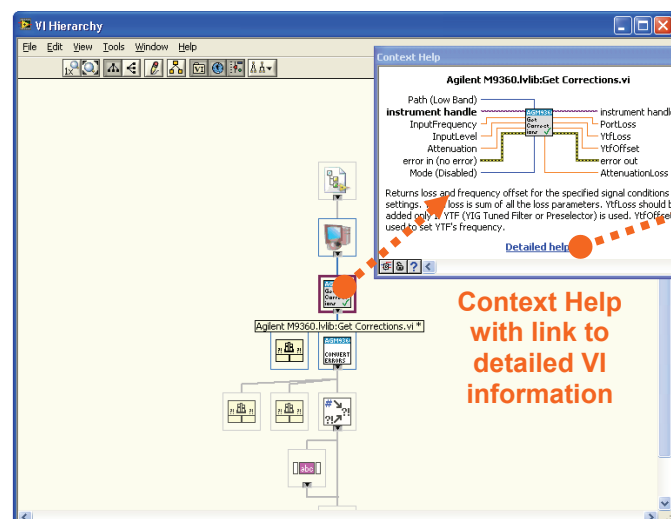
Press F1 with focus on Method

IVI Driver help system



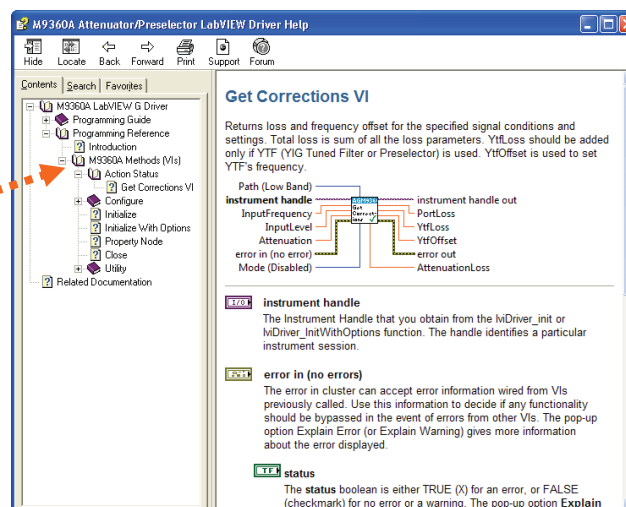
- IVI-COM and IVI-C driver programmer's reference
- Sample programs

LabVIEW



Context Help with link to detailed VI information

LabVIEW Driver help system



- LabVIEW driver programmer's reference
- Sample programs